



- Product Code: GDP2001**  
**DEC:2" Black Nylon Roller**
- 4" ZINC PLATED STEM WORKING LENGTH = 3 5/8"
  - BULGED SHOULDER
  - RATING :50-LB LOAD @ 10,000-8' DOOR CYCLES



- Product Code: GDP2002**  
**DEC:2" 11 Ball Nylon Roller With Zinc Plated Stem**
- 4" STEM ( WORKING LENGTH=3 1/4" )
  - BULGED SHOULDER
  - WHITE NYLON TIRE FOR QUIET OPERATION



- Product Code: GDP2003**  
**DEC:2" 11 Ball Nylon Roller With Zinc Plated Stem**
- 7" STEM ( WORKING LENGTH=6 1/4" )
  - BULGED SHOULDER
  - WHITE NYLON TIRE FOR QUIET OPERATION



- Product Code: GDP2004**  
**DEC:2" 7 Ball Steel Roller with Zinc Plated Stems**
- 4" STEM ( WORKING LENGTH=3 1/4" )
  - BULGED SHOULDER
  - HARDENED RACES



**Product Code: GDP2005**

**DEC:2" 10 Ball Steel Roller With Zinc Plated stems**

- 4" STEM ( WORKING LENGTH=3 1/4" )
- BULGED SHOULDER
- RATING :75-LB LOAD @ 15,000-12' DOOR CYCLES
- HARDENED RACES



**Product Code: GDP2006**

**DEC:2" 10 Ball Steel Rollers with Zinc Plated Stems**

- 7" STEM ( WORKING LENGTH = 6 1/4" )
- BULGED SHOULDER
- RATING :75-LB LOAD @ 15,000 - 12' DOOR CYCLES
- HARDENED RACES



**Product Code: GDP2007**

**DEC:3"10 Ball Steel Roller**

- 4" STEM ( WORKING LENGTH = 3 1/4" )
- BULGED SHOULDER
- RATING :150-LB LOAD @ 50,000 - 12' DOOR CYCLES
- HARDENED RACES



**Product Code: GDP2008**

**DEC:3"10 Ball Steel Roller**

- 7" STEM ( WORKING LENGTH = 6 1/4" )
- BULGED SHOULDER
- RATING :150-LB LOAD @ 50,000 - 12' DOOR CYCLES
- HARDENED RACES



**Product Code: GDP2009**  
**DEC:3"10 Ball Steel Roller**  
·3" 10 BALL STEEL ROLLER  
·9" STEM ( WORKING LENGTH = 8 1/2" )  
·BULGED SHOULDER  
·RATING :150-LB LOAD @ 50,000 - 12' DOOR CYCLES  
·HARDENED RACES



**Product Code: GDP2010**  
**DEC:3" Pulleys**  
·BRIGHT ZINC PLATED STEEL  
·BORED FOR 3/8" DIAMETER BOLT  
·HARDENED INNER RACE  
·MAX CABLE DIAMETER:3/16"  
·6" SOLID RIVETS



**Product Code: GDP2011**  
**DEC:4" Pulleys**  
·BRIGHT ZINC PLATED STEEL  
·BORED FOR 3/8" DIAMETER BOLT  
·HARDENED INNER RACE  
·MAX CABLE DIAMETER:3/16"  
·6" SOLID RIVETS



**Product Code: GDP2012**  
**DEC:FLANGED BALL BEARING**  
·1" BORE, 2" O.D. 1 1/4" BORE, 2" OD  
·INNER RACE OFFSET : 13/64" FROM BEARING PLATED  
·RATED LOAD:250 - LBS @ 10,000 - 8' DOOR CYCLES  
·HARDENED STEEL RACES & BALL



**Product Code: GDP2013**  
**DEC:BUSHING, FLAGED NYLON**  
·1" BORE 2" OD  
·INNER RACE OFFSET : 7/32" FROM BEARING PLATE  
·FOR CENTER SUPPORT ONLY



**Product Code: GDP2014**  
**DEC:1" COLLARS**



**Product Code: GDP2015**  
**DEC:3" Nylon rollers**  
·4" ZINC PLATED STEM WORKING LENGTH = 3 5/8"  
·BULGED SHOULDER  
·RATING :50-LB LOAD @ 10,000-8' DOOR CYCLES



**Product Code: GDP2016**  
**DEC:BUSHING**  
1" BORE 2" OD  
INNER RACE OFFSET : 7/32" FROM BEARING PLATE  
FOR CENTER SUPPORT ONLY



**Product Code: GDP2017**  
**DEC:2" Sealed Nylon Rollers**  
·4" STEM ( WORKING LENGTH=3 1/4" )  
·BULGED SHOULDER  
·WHITE NYLON TIRE FOR QUIET OPERATION



**Product Code: GDP2018**  
**DEC:2" Sealed Nylon Rollers**  
·7" STEM ( WORKING LENGTH=6 1/4" )  
·BULGED SHOULDER  
·WHITE NYLON TIRE FOR QUIET OPERATION



**DEC:14 GA Zinc Plated Hinges #1-#6**

- GDP1001 14 GA Zinc Plated Hinges #1**
- GDP1002 14 GA Zinc Plated Hinges #2**
- GDP1003 14 GA Zinc Plated Hinges #3**
- GDP1004 14 GA Zinc Plated Hinges #4**
- GDP1005 14 GA Zinc Plated Hinges #5**
- GDP1006 14 GA Zinc Plated Hinges #6**

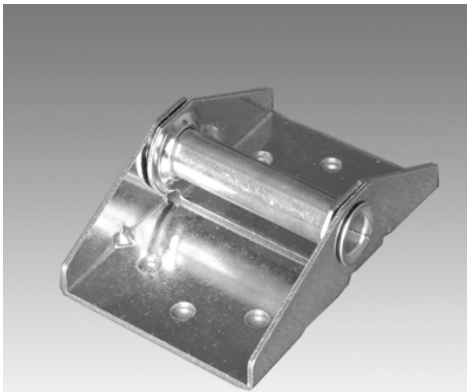


**DEC:18 GA Zinc Plated Hinges #1-#4**

- GDP18G01 18 GA Zinc Plated Hinges #1**
- GDP18G02 18 GA Zinc Plated Hinges #2**
- GDP18G03 18 GA Zinc Plated Hinges #3**
- GDP18G04 18 GA Zinc Plated Hinges #4**



- DEC:11 GA Zinc Plated Hinges #1-#10**
- GDP11G01 11 GA Zinc Plated Hinges #1**
- GDP11G02 11 GA Zinc Plated Hinges #2**
- GDP11G03 11 GA Zinc Plated Hinges #3**
- GDP11G04 11 GA Zinc Plated Hinges #4**
- GDP11G05 11 GA Zinc Plated Hinges #5**
- GDP11G06 11 GA Zinc Plated Hinges #6**
- GDP11G07 11 GA Zinc Plated Hinges #7**
- GDP11G08 11 GA Zinc Plated Hinges #8**
- GDP11G09 11 GA Zinc Plated Hinges #9**
- GDP11G10 11 GA Zinc Plated Hinges #10**



- Product Code: GDP1007**
- 14 GAUGE HINGE 1/2 CUT DOWN HINGE
  - BRIGHT ZINC PLATED 14 GAUGE STEEL HINGE LEAVES
  - FULL BODY 2 3/4" WIDE
  - FOR USE WITH 7/16" DIAMETER STEM ROLLERS



- Product Code: GDP1012**
- Finger Protection Hinge**  
**Bright zinc plated steel**  
**14 GA roller carrier**  
**14 Ga base plate**  
**mounting holes on 3" center vertically**  
**adjustment 3/8" min.to 3" max.**



- Product Code: GDP1013**
- Commercial adjustable hinge**  
**Bright zinc plated steel**  
**14 GA roller carrier**  
**14 Ga base plate**  
**mounting holes on 3" center vertically**  
**adjustment 3/8" min.to 3" max.**





**Product Code: GDP1014**

- \* COMMERCIAL ADJUSTABLE HINGE
- \* BRIGHT ZINC PLATED
- \* THICKNESS 14 GAUGE ( 2.0MM)
- \* INSTALLED ON BOTH SIDES OF THE DOOR WITH FINGER SAFTY.



**Product Code: GDP1015**

- \* COMMERCIAL ADJUSTABLE HINGE
- \* BRIGHT ZINC PLATED
- \* THICKNESS 14 GAUGE ( 2.0MM)
- \* INSTALLED ON BOTH SIDES OF THE DOOR WITH FINGER SAFTY.



**Product Code: GDP1016**

**GDP1016**

**DEC: Center Hinge**

**Thickness:1.8mm**

**For use with 11mm diameter roller**

**Finish: zinc plated Mounting Holes on 1-5/8" centers vertically**



**Product Code: GDP1016-B**

**GDP1016-B**

**DEC: Center Hinge**

**Thickness:1.8mm**

**For use with 11mm diameter roller**

**Finish: zinc plated Mounting Holes on 1-5/8" centers vertically**



**Product Code: GDP1017**  
**DEC: Center Hinge**  
**Thickness:1.8mm**  
**For use with 11mm diameter roller**  
**Finish: zinc plated** Mounting Holes on 2-5/8" centers vertically



**Product Code: GDP1018**  
**DEC: Center Hinge**  
**Thickness:1.8mm**  
**For use with 11mm diameter roller**  
**Finish: zinc plated**



**Product Code: GDP1018-A**  
**DEC: Center Hinge**  
**Thickness:1.8mm**  
**For use with 11mm diameter roller**  
**Finish: zinc plated**



**Product Code: GDP1019**  
**DEC: Side Hinges**  
**Thickness:2.50mm**  
**For use with 11mm diameter roller**  
**Finish: zinc plated**





**Product Code: GDP1020**  
**DEC: Central Hinges**  
**Thickness:2.50mm**  
**For use with 11mm diameter roller**  
**Finish: zinc plated**



**Product Code: GDP1010**  
**Adjustable top rollers**  
**top bracket with rollers**  
**bright zinc plated 12 Gauge, 2" 11 ball nylon rollers**  
**roller rating :75 lb load@15000 12" door cycles**