



**Product Code:GDP6003**

- CHAIN HOIST 4:1 REDUCED DRIVE
- WALL-MOUNT
- INCLUDES: 1 PC OF 41B36 SPROCKET, 1" BORE  
36" OF # 41 ROLLER CHAIN  
26' OF HAND CHAIN  
1 PC OF CHAIN KEEPER  
1/4" SQUARE KEY



**Product Code: GDP6004**

- CHAIN HOIST 3:1 REDUCED DRIVE
- WALL OR TRACK MOUNTED
- INCLUDES: 1 PC OF 41B36 SPROCKET, 1" BORE  
36" OF # 41 ROLLER CHAIN  
26' OF HAND CHAIN  
1 PC OF CHAIN KEEPER  
1/4" SQUARE KEY



**Product Code: GDP6005**

- CHAIN HOIST 4:1 REDUCED DRIVE
- SHAFT-MOUNT
- INCLUDES:  
1 PCS OF 41B60 SPROCKET,22" OF 41 ROLLER CHAIN  
26' OF HAND CHAIN,1 PCS OF CHAIN KEEPER  
2 PFS OF SHAFT COLLARS,1/4" SQUARE KEY  
1 PCS OF WALL STABILIZER BRACKET  
REQUIRES MINIMUM 3 3/8" CENTER LINE OFFET



**Product Code: GDP6010**

- DEC: 4015 Chain Hoist**  
**6 6:1 reduced drive**  
**Wall mounted**  
**Includes:**  
 1)41B60 sprocket,1 Inch bore  
 2)48 Inch of #41 roller chain  
 3)26' of hand chain  
 4)Chain keeper  
 5)1/4 \*1/4 1 3/8 square key



**Product Code: GDP6009**

**DEC:Rotary Joint**

**Include screw**

**Finish :black zinc plated**



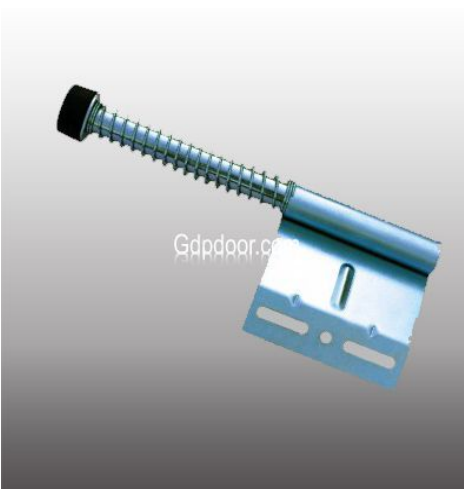
**Product Code: GDP6006**

**DEC:Shaft Coupler**

**The coupler is made of cast Iron.**

**the coupler's flanges are attached together by three 3/8 inch bolt and nut.**

**Surface painted.**



**Product Code: GDP6001**

- PUSHER SPRINGS 15"
- 12 GAUGE BRACKET WITH MOUNTING SLOTS
- ZINC PLATED STEEL TOTAL LENGTH: 15".6" COMPRESSION
- APPROX-COMPRESSION-10 LB/INCH
- 2" DIAMETER RUBBER BUMPER
- INCLUDES 1 LEFT HAND AND 1 RIGHT HAND



**Product Code: GDP6002**

- PUSHER SPRINGS 27"
- 12 GAUGE BRACKET WITH MOUNTING SLOTS
- ZINC PLATED STEEL TOTAL LENGTH: 27".15" COMPRESSION
- APPROX-COMPRESSION-10 LB/INCH
- 2" DIAMETER RUBBER BUMPER
- INCLUDES 1 LEFT HAND AND 1 RIGHT HAND
- INCLUDES 1 LEFT HAND AND 1 RIGHT HAND BRACKET



**Product Code: GDP6008**



**DEC:Small Size Pusher Spring**  
The is Provided with 2 Inch rubber stop for use small door pusher  
**Thickness:2.5mm**  
**Finish:zinc plate**



**Product Code: GDP-Spring**  
**DEC:Torsion springs**



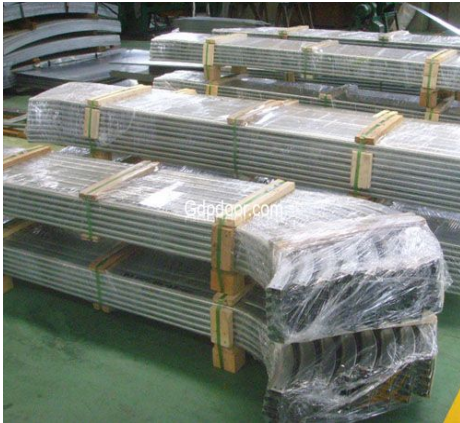
**Product Code: 9003**  
**DEC: Hollow Shaft tube with keyway**



**Product Code: 9002**  
**DEC: Hollow Shaft tube**



**Product Code: GDP9001**  
**DEC: Solid shaft**



**Product Code: Tracks**  
**thickness 1.5mm tracks**  
**thickness 2.0mm tracks**



**Product Code: GDP5001**  
**DEC:Plastic Lock**  
**handle lock with one word key**



**Product Code: GDP5003**  
**DEC:SWIVEL LATCH**  
**· BRIGHT ZINC PLATED STEEL 12 GUAGE HANDLE**



**Product Code: GDP5005**

**DEC:ROLLED GRIP LIFT HANDLE 5 1/4"**  
**· BRIGHT ZINC PLATED 14 GAUGE STEEL**



**Product Code: GDP5006**

**DEC:ROLLED GRIP LIFT HANDLE 5 1/4"**  
**· BRIGHT ZINC PLATED 14 GAUGE STEEL**  
**· MOUNTING HOLES 5 1/2" ON CENTERS**



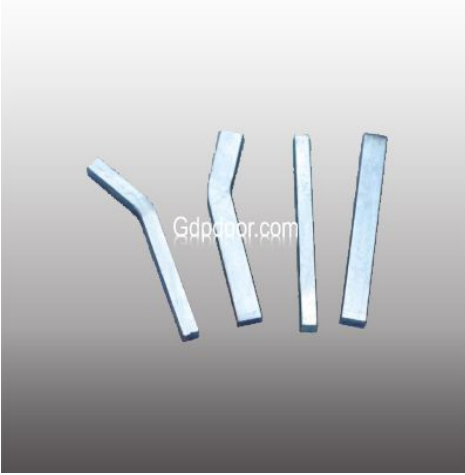
**Product Code: GDP5007**

**DEC:ROLLED GRIP LIFT HANDLE 5 1/4"**  
**· BRIGHT ZINC PLATED 14 GAUGE STEEL**  
**· MOUNTING HOLES 5 1/2" ON CENTERS**



**Product Code: GDP5008**

**DEC: INSIDE NYLON T HANDLE**  
**· PLASTIC INSERT**  
**· REINFORCED NYLON**  
**· MATTE BLACK FINISH**



Product Code: GDP5009

DEC:Keyway



Product Code: GDP5010

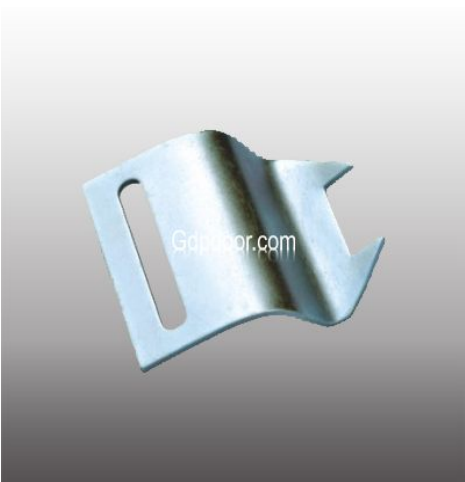
DEC: BRIGHT CHROME PLATED



Product Code: GDP3032

DEC:AUTO LATCH

- BRIGHT ZINC PLATED STEEL AND SPRING
- 13 GAUGE BASE PLATE
- 11 GAUGE FLIPPER ARM
- KEYHOLE SLOT FOR CABLE INSERTION AND ADJUSTMENT



Product Code: GDP5015

DEC:AUTO LATCH STRIKER

- BRIGHT ZINC PLATED STEEL 14 GAUGE
- 2 1/4" LONG SLOT FOR ADJUSTMENT
- DEEP NOTCH FOR POSITIVE ENGAGEMENT & SECURITY





Product Code: GDP5016

DEC:SWIVEL LATCH

- BRIGHT ZINC PLATED STEEL 12 GAUGE HANDLE
- 14 GAUGE BASE PLATE
- USE WITH AUTOLATCHES AND KEYED T HANDLES, USING EITHER CABLE OR CHAIN



Product Code: GDP5017-S

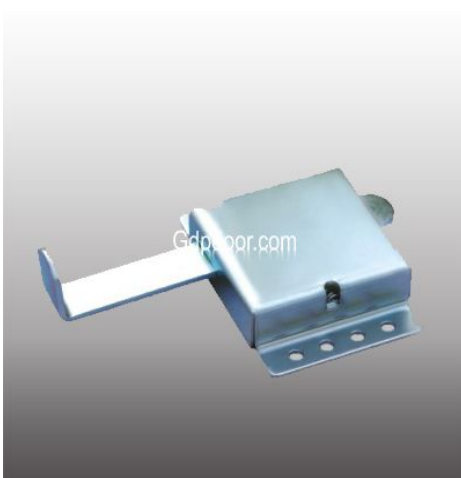
DEC:Residential Inside Slide Latch

Include cases,bar,spring and screws

Case:2mm steel. Bar:4mm steel

The center line of the fixing holes is 83mm

Finish: zinc plate



Product Code: GDP5017-B

DEC:Commercial Inside Slide Latch

Include cases,bar,spring and screws.

Case:1.5mm steel. Bar:4mm steel.

The center line of the fixing holes is 102mm.

Finish: zinc plate



Product Code: GDP5017-WB

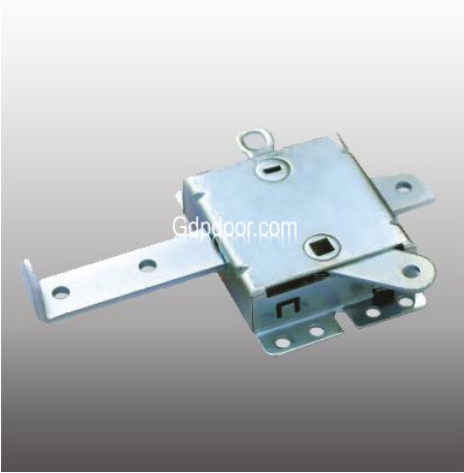
DEC:Commercial Inside Slide Latch

Include cases,bar,spring and screws.

Case:1.5mm steel. Bar:4mm steel.

The center line of the fixing holes is 102mm.

Finish: zinc plate



**Product Code: GDP5018**

- END STILE LATCH SPRING ACTUATED INSIDE LOCK ASSEMBLY
- 7 1/2" LOCK BAR WITH 2 1/8" THROW
- BRIGHT ZINC PLATED STEEL
- USE WITH KEYED LOCK HANDLE ASSEMBLY, PART DM 3055
- SUITABLE FOR USE WITH LOCKBARS, OR END STILE MOUNTING
- FITS ANY OUTSIDE LOCK HANDLE WITH 2 3/4" CENTER LINE



**Product Code: GDP5021**

- KEYED T HANDLE, BRIGHT CHROME FINISH
- 1 3/16" LONG BLIND MOUNT POSTS FOR 1 3/8" THICK DOORS
- ZINC PLATED 5/16" SQUARE X 3 3/4" LONG SHAFTS 90 DEGREE ROTATION
- INCLUDES # 10 - 24 X 1/2" PHILLIPS HEAD MOUNTING SCREWS
- INCLUDES SHAFT CLIP, 100 DIFFERENT KEY CHANGES AVAILABLE
- FITS DOORS FROM 1 3/8" - 2" THICK  
(REQUIRE OPTIONAL SPACERS & FASTENER)



**Product Code: GDP5022**

- KEYED T HANDLE
- 1 13/16" LONG BLIND MOUNT POSTS FOR 2" THICK DOORS
- BRIGHT CHROME FINISH
- ZINC PLATED 5/16" SQUARE X 4 1/4" LONG SHAFT, 360 DEGREE ROTATION
- INCLUDES # 10 - 24 X 3/4" PHILLIPS HEAD MOUNTING SCREWS
- INCLUDES SHAFT CLIP, 100 DIFFERENT KEY CHANGES



**Product Code: GDP5023**

- HANDLE, KEYED T - OUTSIDE MOUNTING - NO POSTS





Product Code: GDP5024  
BRIGHT CHROME PLATED,INC.LOCK AND 2 KEYS



Product Code: GDP5025

- DUMMY T HANDLE SET BRIGHT CHROME FINISH
- COMPLETE WITH INSIDE AND OUTSIDE HANDLES
- INCLUDES ALL REQUIRED MOUNTING HARDWARES
- ZINC PLATED 5/16" SQUARE X 3" LONG SHAFT EXTENSION WITH OUTSIDE ESCUTCHEON ATTACHED #8 MOUNTING SCREWS
- WITH FIT UP TO AN AND INCLUDING 2" THICK DOORS



Product Code: GDP5026  
BRIGHT CHROME PLATED,INC.LOCK AND 2 KEYS



Product Code: GDP5027  
BRIGHT CHROME PLATED



**Product Code: GDP5028**  
**BRIGHT CHROME PLATED**



**Product Code: GDP5031**  
**BRIGHT CHROME PLATED**



**Product Code: GDP5032**

- INSIZE RELEASE HANDLE
- BRIGHT ZINC PLATED STEEL 12 GUAGE
- HANDLE FITTED WITH BLACK PLASTIC GRIP
- USE WITH AUTOLATCHES AND KEYED T HANDLES, USING EITHER CABLE OR CHAIN



**Product Code: GDP5030**

- DEADBOLT STEEL CASE
- 100 KEY CHANGES AVAILABLE
- ZINC PLAED STEEL CASE
- COMPLETE WITH REQUIRED MOUNTING HARDWARE
- QUALITY 5 PIN TUMBLER RIM CYLINDER, WITH 2 KEYS
- FOR USE ON DOORS UP TO 2" THICK
- MASTER KEYING AVAILABLE USE PART # HD3101
- MAX AVAILABLE KEY CODES - ( 25)



**Product Code: GDP5029**

- **DEAD BOLT DIECAST CASE**
- **100 KEY CODES AVAILABLE**
- **POWDER COATED ZINC CASE**
- **COMPLETE WITH REQUIRED MOUNTING HARDWARE**
- **QUALITY 5 PIN TUMBLER RIM CYLINDER WITH 2 KEYS**
- **FOR USE ON DOORS UP TO 2" THICK**



**Product Code: GDP5020**

- **INSIDE NYLON T HANDLE**
- **PLASTIC INSERT**
- **REINFORCED NYLON**
- **MATTE BLACK FINISH**
- **USE WITH AUTO LATCHES AND KEYED T HANDLES, USING EITHER CABLE OR CHAIN**